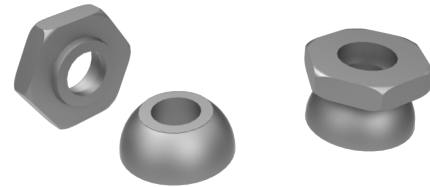


## Secure fasteners for improved security

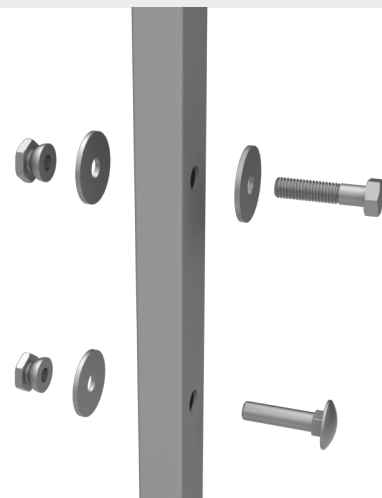
A kit of secure fasteners for the Caelum wall system. Included is a special nut where the hexagon part of the Shear Nut shears off when the correct torque is achieved. This leaves a tamper resistant cone that is difficult to remove with conventional tools. The kits include shear nuts and load spreading washers for both 19x19mm and 20x30mm framework panels. Security can be improved further by combining with dome headed carriage bolts.



### FACTS

#### System components

36802200	Kit shear nuts M8 (25pcs)
89050156	Carriage bolt M8x35 MVBF FZB
89050158	Carriage bolt M8x55 MVBF FZB
89050044	Bolt M8x55 tensi



#### ACCESSORIES FOR CAELUM WALL SYSTEM

Caelum is a modular mesh panel system that is specifically designed for factory and warehouse division. The system's flexibility makes it a very cost-effective solution. The system is available in various security configurations and is easy to assemble. Panels are constructed using strong, durable steel frames. Available in different security levels, UR325, UR350, UX450 and fullsteel UR SP. Troax also offers a variety of posts and fixings for attaching panels to the floor and ceiling.

