



Quality assured

TROAX offers hygienic modular machine guarding in stainless steel, suitable for the food and pharmaceutical industry. All machine guards comply with ISO14120, ISO 13857 and fulfills the requirements in Annex 1.4.2.1 of the Machinery Directive 2006/42/EC.

Today's modern industry with advanced processes generates significant demands on safety. All machine guard systems from Troax are tested in our own Test Center and the High-Line and Competition Line systems are tested with a 100 kg weight hitting the guard from the inside with a speed of 20 km/h, equivalent to an impact of 1600 joules. Watch the impact test video, download the test reports and read more about our machine guard systems at www.troax.com.



Hygienic stainless steel

for machine guarding applications.



High line

The Troax High Line is a modular machine guarding system engineered for the food and pharmaceutical industries where there are stringent requirements for hygiene, ease of cleaning and safety. This product offering is manufactured entirely of stainless steel and available in both AISI 304 and acid resistant AISI 316.

The welded mesh panels with thread wire frame and the uniquely designed V and U shaped posts allow for complete, effective and hygienic cleaning. To promote "puddle free" surfaces, ALL mesh is rounded and mounting bolts are flanged and incorporate spacers. The posts are also raised anchor designed so that bacteria, dirt and dust have NO place to hide. Additionally, the post anchoring system affords you the luxury of height adjustment for projects where dimensions are a little more exacting.



Troax, Inc. 5000 Linbar Dr., Suite 205 Nashville Tennessee 37211 USA
Phone: +1 615-730-7581 Fax: +1 615-730-7583 info@troax.us www.troax.com

201508-3415-EN-US

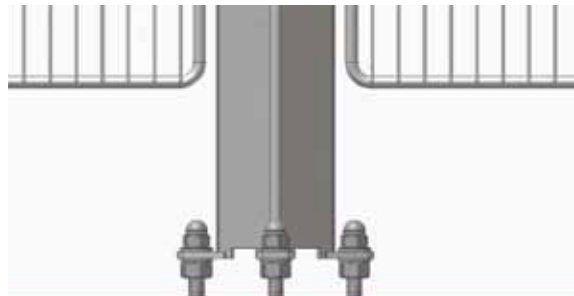




Hygienic design, easy assembly



No horizontal surfaces.



Can be installed with threaded rods to raise from the floor.

and high functionality



Hinges for door.



Door handle.



Sliding door fixing.



Hinged door snap lock.

Competition line

The Troax Competition Line is a modular machine guarding system engineered for the food and pharmaceutical industries where there are stringent requirements for hygiene, ease of cleaning and safety. This product offering is manufactured entirely of stainless steel and available in both AISI 304 and acid resistant AISI 316.

Easily adjusted on site

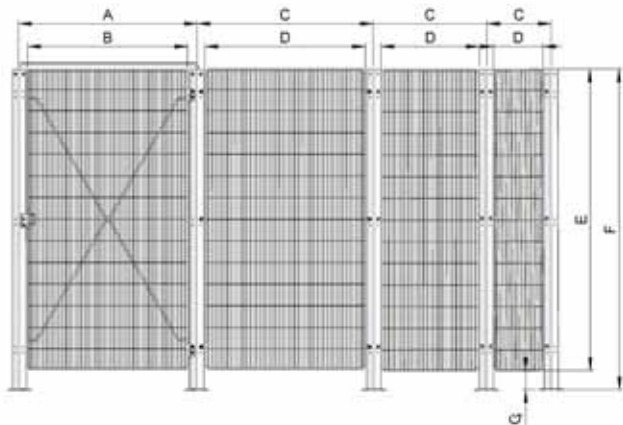
This system is also easy to install AND offers extreme flexibility and adaptability. Competition Line panels are frameless, allowing you to make adjustments to both height and width, ON SITE. This product feature means you can be more creative in the design phase, or more importantly, it means you can be ready for those unforeseen needs to change on the plant floor.

High line

SYSTEM HEIGHT 2000 MM

Letter	Description	Dim. in mm
A	Door module	1106
B	Door width	1000
C	Module	1106/706/406
D	Mesh width	1000/600/300
E	Mesh height	1870
F	Post height	2000
G	Clearance	130
	Type: MESH	135-20
	Type: WIRE	Ø3 mm and Ø4 mm

2500 and 2700 mm available on request.

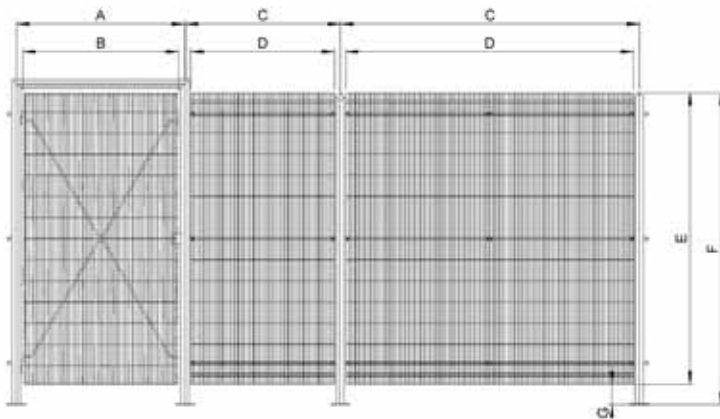


Competition line

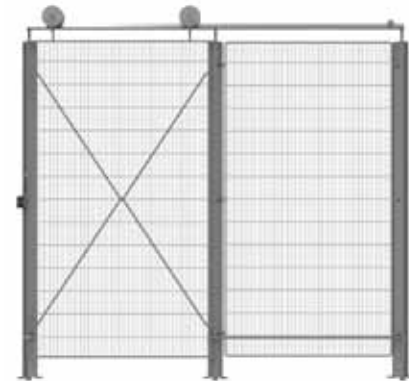
SYSTEM HEIGHT 2000 MM

Letter	Description	Dim. in mm
A	Door module	1085
B	Door width	1000
C	Module	2000/1000
D	Mesh width	1923/923
E	Mesh height	1870
F	Post height	2000
G	Clearance	130
	Type: MESH	135-20
	Type: WIRE	Ø3 mm and Ø4 mm

2400 mm available on request.



Sliding doors



Large, durable roller surface increases stability.

Hinged doors

