

Machine guard door

The linear sliding door is a very stable and robust door that can be built with our ST20 and ST30 mesh panels or our Polycarbonate panels, using the 60x40 or 80x80 posts depending on the chosen size.

The strong rail runs on roller barings at the bottom, creating an opening with free access in height. Build the door in many sizes using our 4 standard panel heights in 1250, 2050, 3300 and 4100 mm and using up to 4 panels in width, creating a door blade that is 6000 mm wide.

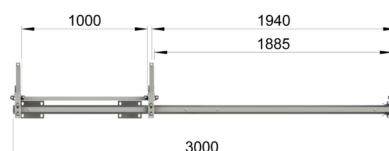
Depending on the risk assessment, you choose the preferable lock for your door. The Linear door can be equipped with the Troax Safe Lock that fits many safety switches.



FACTS

Door Sizes from 1800 mm - 4250 mm

System Height	Panel types	Post options
1400 mm	ST20, ST30 mesh	60x40 or 80x80
2200 mm	ST20, ST30 mesh or polycarbonate	60x40 or 80x80
3450 mm	ST30 mesh	80x80
4250 mm	ST30 mesh or polycarbonate	60x40 double posts

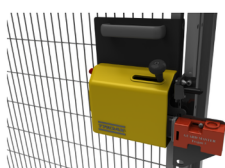


LOCK OPTIONS

Euro Cylinder Lock (Kit 5780)



Safe Lock (Kit 5030)



Safe Lock Escape Release (Kit 5040)

