



BLUE GUARD STAINLESS STEEL

HYGIENIC MACHINE GUARDING AND SAFETY FENCING

PROTECTING PEOPLE, PROPERTY, AND PROCESSES.

MAXIMUM SAFETY

MAXIMUM HYGIENE

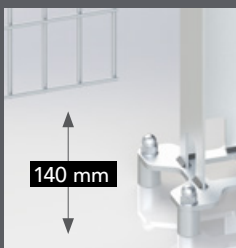
The BlueGuard modular system is the result of years of experience within Troax Group. It combines safety, flexibility and compliance with the highest hygiene standards required by the agro-food, chemical and pharmaceutical markets.

The 4 mm welded wire panel is frameless, and strengthened by transversal folds. It is constructed of AISI 304 stainless steel, which is finished by passivation. When assembled, the panel is fixed to an open and washable U-shaped post. The panels are fastened with high-resistant, captive fixings fabricated with techno-polymer and stainless steel.

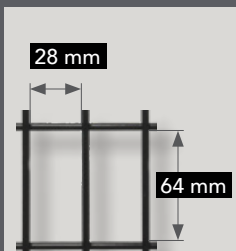
BlueGuard is quick to assemble: a single, universal post for linear, angular and door mounting, reduces set up time and increases flexibility. Wide access points facilitate the use of power tools, while the frameless construction allows panel sizes to be modified easily and quickly on site.

02

BLUE GUARD BY TROAX



SAFETY EN ISO 13857
140 mm floor sweep
EN ISO 13857-4.3



28 x 64 mm slot
opening allows for
installation of the
guarding 200 mm from
the hazard zone
EN ISO 13857-4.2

ROBUST

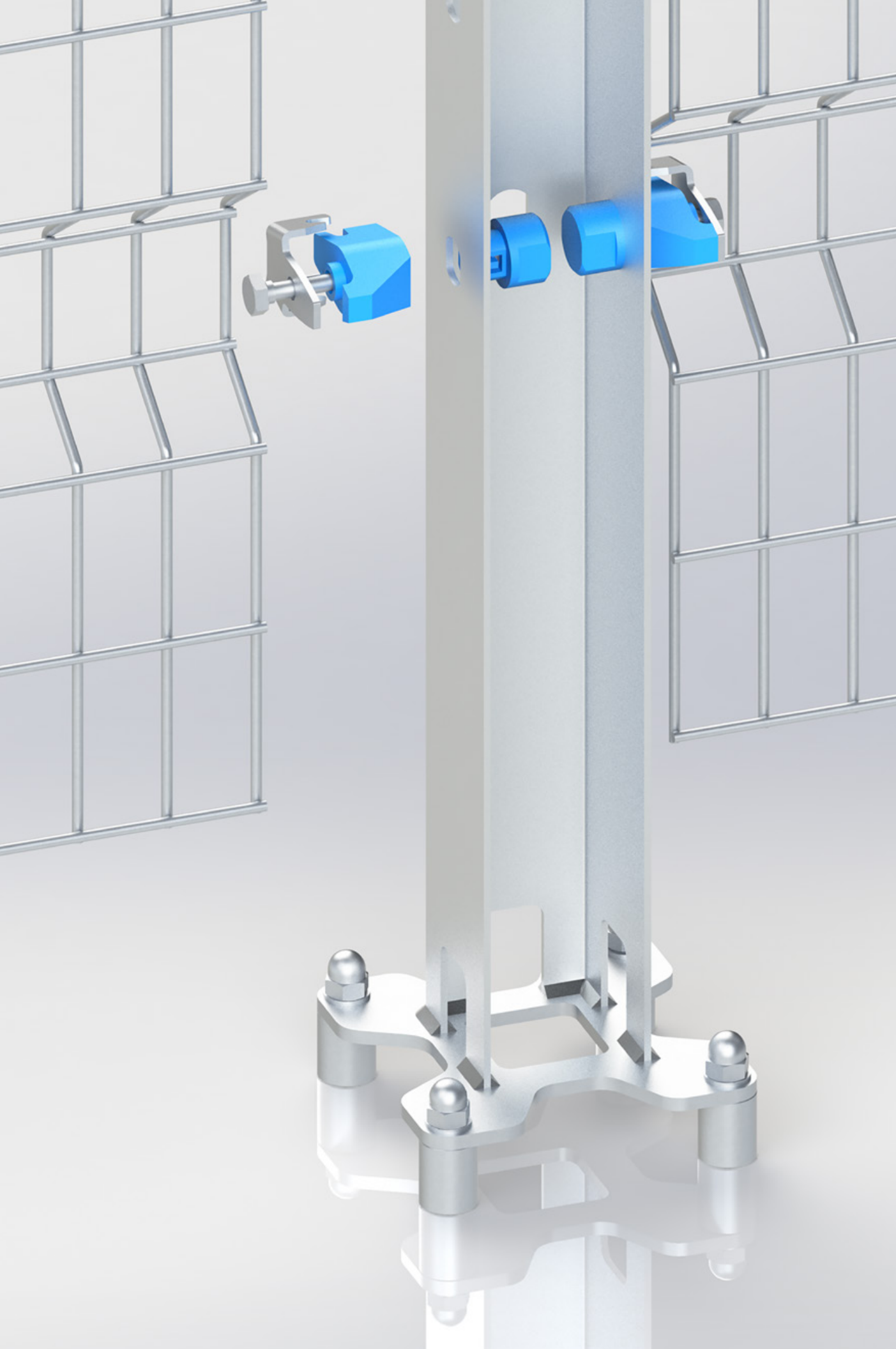
- ✓ Stainless Steel AISI 304
- ✓ Techno-polymer fixings
- ✓ 4 mm welded wire with reinforcement profiling
- ✓ Resistant to high-pressure water jets

PRACTICAL

- ✓ Reduced number of components
- ✓ Quick fastening system
- ✓ Frameless, for easy, on-site adaptability
- ✓ Captive fixings = standard's compliance

HYGIENIC

- ✓ Durable
- ✓ Maintenance
- ✓ **ECOLAB** Tested and Certified

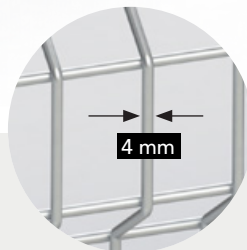
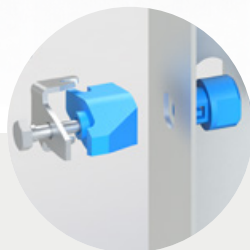


ROBUST AND CLEAN DESIGN

04

BLUE GUARD BY TROAX

Blueguard's fast and efficient installation is achieved by simple, easy-to-use fixings which fit securely to the posts, while the layout can be easily configured to fit the machinery and safety zone's available footprint.



Passivated AISI 304 Stainless Steel and techno-polymer materials are used to ensure maximum resistance to high-pressure water jets.

Wire – 4 mm drawn steel, high tensile strength mesh, with reinforcement profiling.

Greater stability is achieved by attaching the panels to the posts at the position of the reinforcement profiles.

PRACTICAL AND FULLY ADAPTABLE

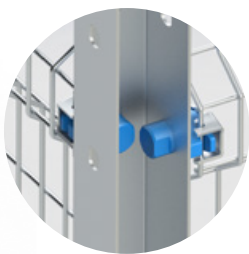
Frameless construction allows panels to be custom sized easily and quickly on-site.

CAPTIVE FIXINGS

2-component system, pre-assembled for quick, compliant fastening.

EN ISO 14120
and 2006/42/EC.





1 REDUCED SURFACE CONTACT

Minimizing metal-to-metal contact.



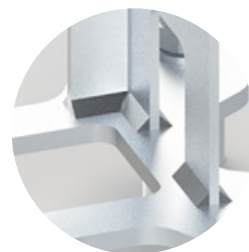
3 INCLINED SURFACES AND SPACERS

Helps to avoid liquid pooling, stagnation and allows for easier, more efficient cleaning.



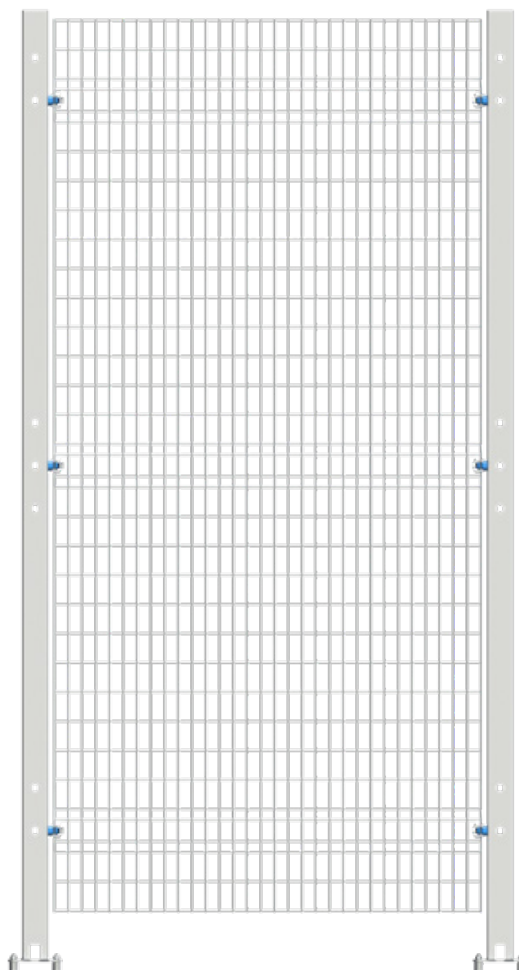
2 OPEN DESIGN

Allows for full cleaning, easy inspection and prevention of the accumulation of dust and residue.



4 TIG WELDING

Maximum cavity reduction for maximum hygienic performance.



05

BLUE GUARD BY TROAX

DURABLE

- ✓ Resistant to high-pressure water jets
- ✓ Corrosion resistance at the AISI 304 level

EASY MAINTENANCE

- ✓ Open Design = Easy Inspection
- ✓ Open Design = Contaminant Accumulation Prevention
- ✓ Open Design = Thorough Cleaning

SAFE

ECOLAB Tested and Certified

Detergent and disinfectant resistance tests for 2000 washing cycles (6 years of use) on:

TOPAZ AC5	P3-TOPAX 66
P3-TOPAX 990	TOPAZ HD3
TOPACTIVE DES	TOPAZ MD3

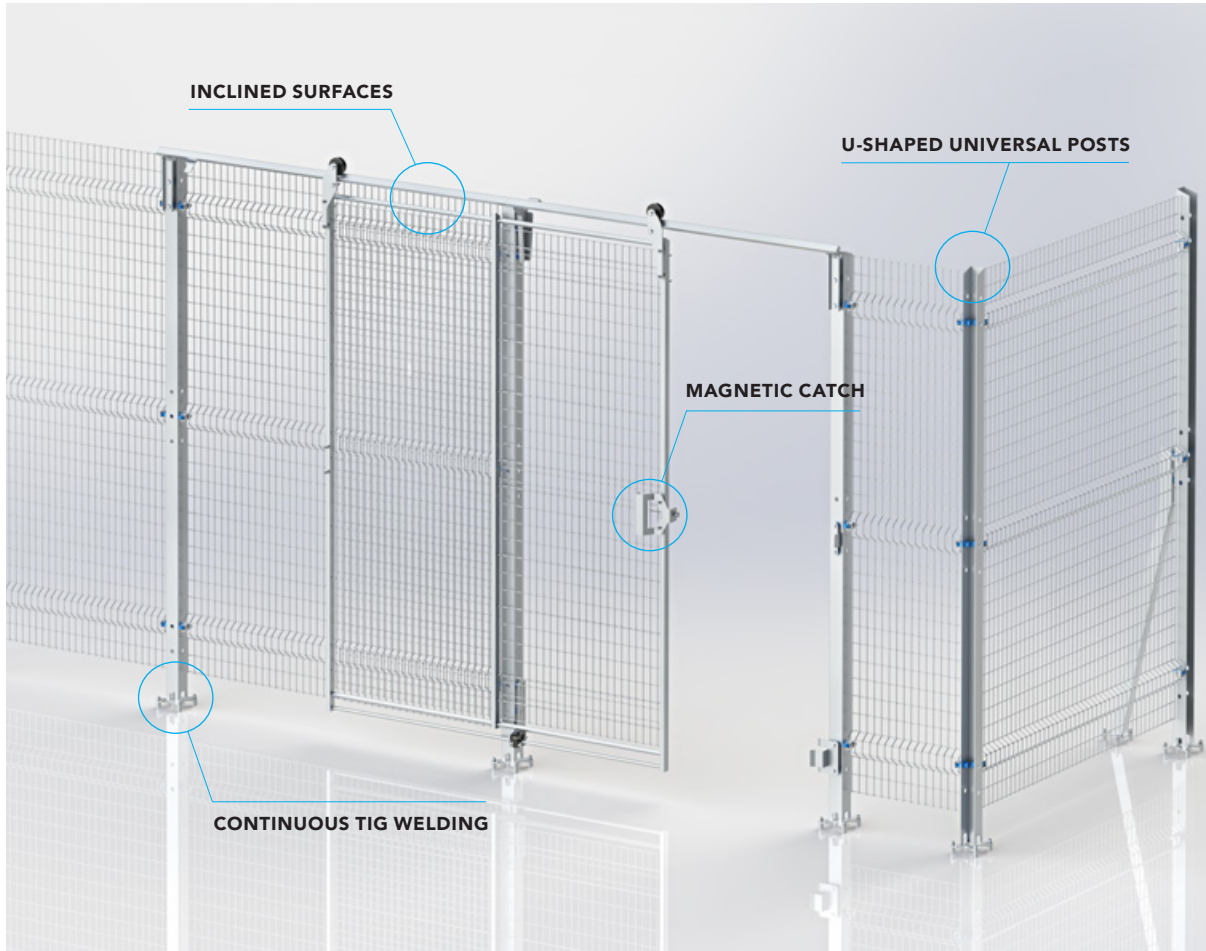
REGULATION COMPLIANCE

BlueGuard is constructed in compliance with the following EUROPEAN and INTERNATIONAL STANDARDS: ISO 14120; EN ISO 12100; EN ISO 13857; EN ISO 10218-2; 2006/42/EC Machinery Directive

TECHNICAL SPECIFICATIONS

06

BLUE GUARD BY TROAX

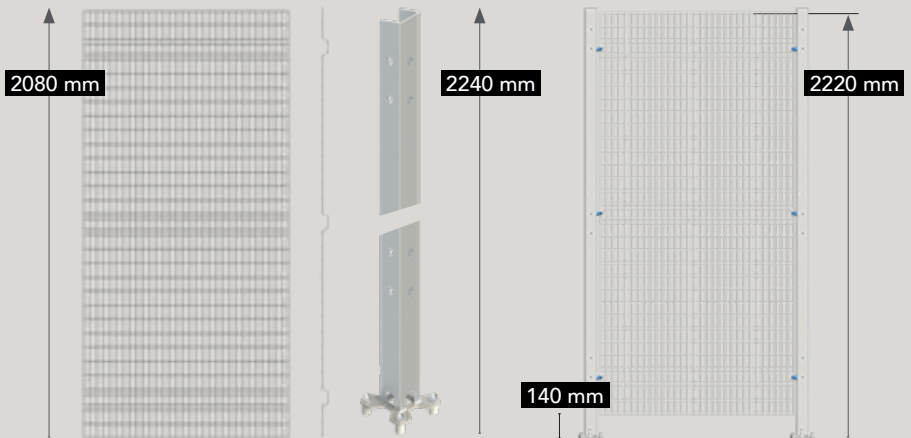


PANELS

Mesh aperture: 32 x 68 x 4 mm
Height: 2080 mm
Widths: 484, 992, 1472, 1988 mm

POSTS

Universal U-shaped: 60x60 mm
Baseplate: continuous TIG welded with 4 anchoring points
Height: 2240 mm



SINGLE HINGED DOOR

SAFE, SOLID, 1000 MM OPENING

- ✓ Framed panel with central reinforcements
- ✓ 20 x 30 mm upper bar
- ✓ 4 + 6 mm welded wire flat mesh
- ✓ 180° swing
- ✓ One panel for both Left and Right opening
- ✓ Hygienic design with inclined surfaces
- ✓ Supplied with Magnetic Catch as standard.



SINGLE SLIDING DOOR

LARGE, STABLE, 1500 MM OPENING

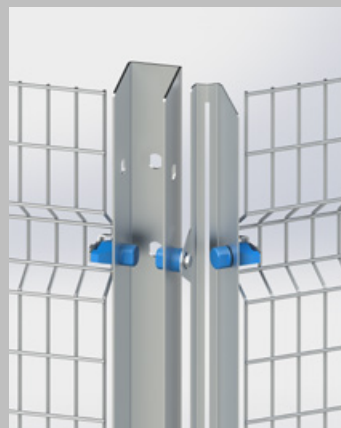
- ✓ Framed panel with central reinforcement
- ✓ 20 x 30 mm upper bar
- ✓ 4 + 6 mm welded wire flat mesh
- ✓ One panel for both Left and Right opening
- ✓ Hygienic design with inclined surfaces
- ✓ Low friction upper trolley
- ✓ Reversed lower slider to avoid dirt accumulation
- ✓ Supplied with Magnetic Catch as standard.



ACCESSORIES

The BlueGuard system can be enhanced with the following accessories:

- ✓ Support for post
- ✓ Variable angle kit
- ✓ Safety switch brackets.



MAKING YOUR WORLD SAFE

