



A revolution in your hands

VERSATILE MACHINE GUARDING FROM TROAX



NEW!
PATENT PENDING

RAPID FIX™

VERSATILE MACHINE GUARDING

RAPID FIX™

VERSATILE MACHINE GUARDING



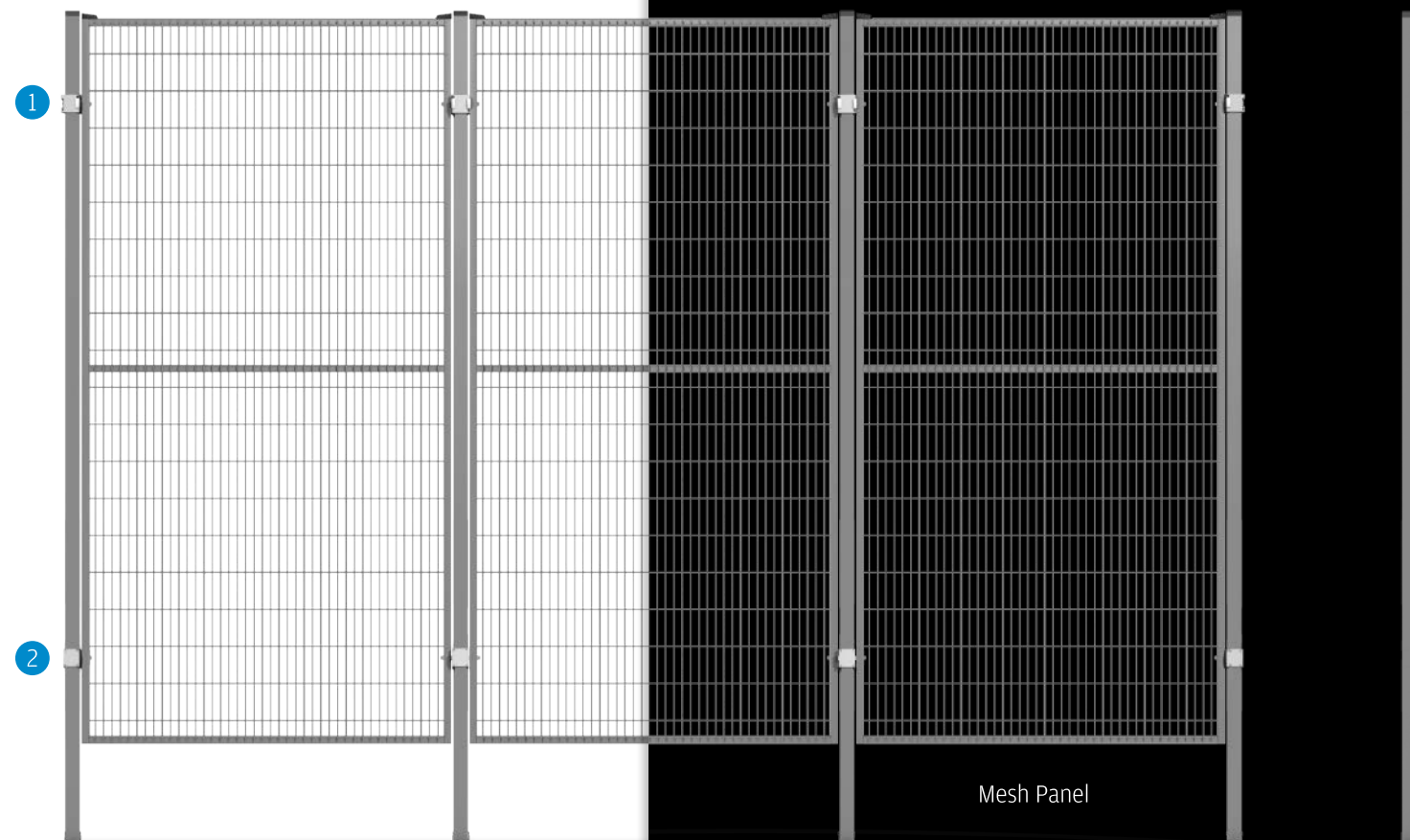
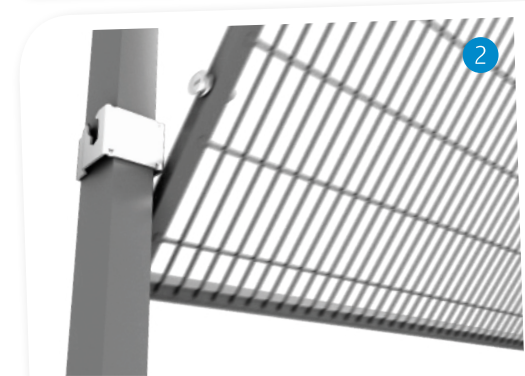
A refined machine safety system

Rapid Fix has been developed in response to market and customer needs for a quick and flexible access solution, e.g when carrying out maintenance.

Rapid Fix brackets are more functional. The lower bracket has a slot that the panel hooks into and the upper bracket has a unique locking mechanism that snaps the panel into the correct position. The locking mechanism means that the panels can be reinstalled quickly and easily.

Compliant with the Machinery Directive

Rapid Fix meets all the requirements of the Machinery Directive - 2006/42/EC and we are working continuously to adapt both existing and new products before they reach the market.

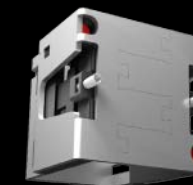


The next step in the evolution of machine protection

Troax currently has a well-proven machine safety system named Smart Fix, where the panels are bolted to the post with the unique Smart Fix fittings. Troax's new Rapid Fix system uses the same posts and panels.

The major difference is the system's two smart and unique brackets, which create the revolutionary functionality.

[Read more at www.troax.com/rapidfix](http://www.troax.com/rapidfix)



Upper fixing - panels are secured with ease using the built-in click function



Lower fixing - Secures the panel's lower position in a simple way.



Post with combined base

TROAX®

SMART FIX™

FLEXIBLE MACHINE GUARDING



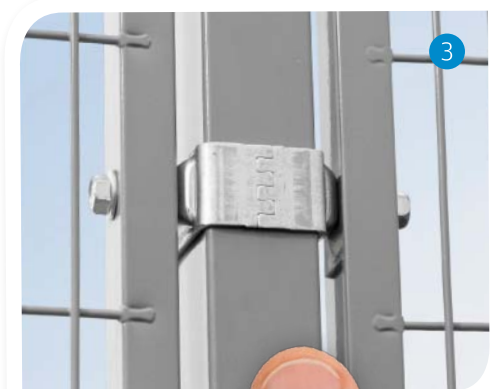
A well-proven machine safety system

Smart Fix is a well-proven machine safety system that includes mesh panels, hinged and sliding doors, posts, corner brackets and a smart panel method. The system has many unique

features and meets the requirements of the Machinery Directive. Smart Fix can be adjusted to compensate for uneven floors. It is possible to alter the angle of the corner fittings up to 180 degrees and is based on components that can be combined with other Troax systems.

Compliant with the Machinery Directive

Smart Fix meets all the requirements of the Machinery Directive - 2006/42/EC and we are working continuously to adapt both existing and new products before they reach the market.



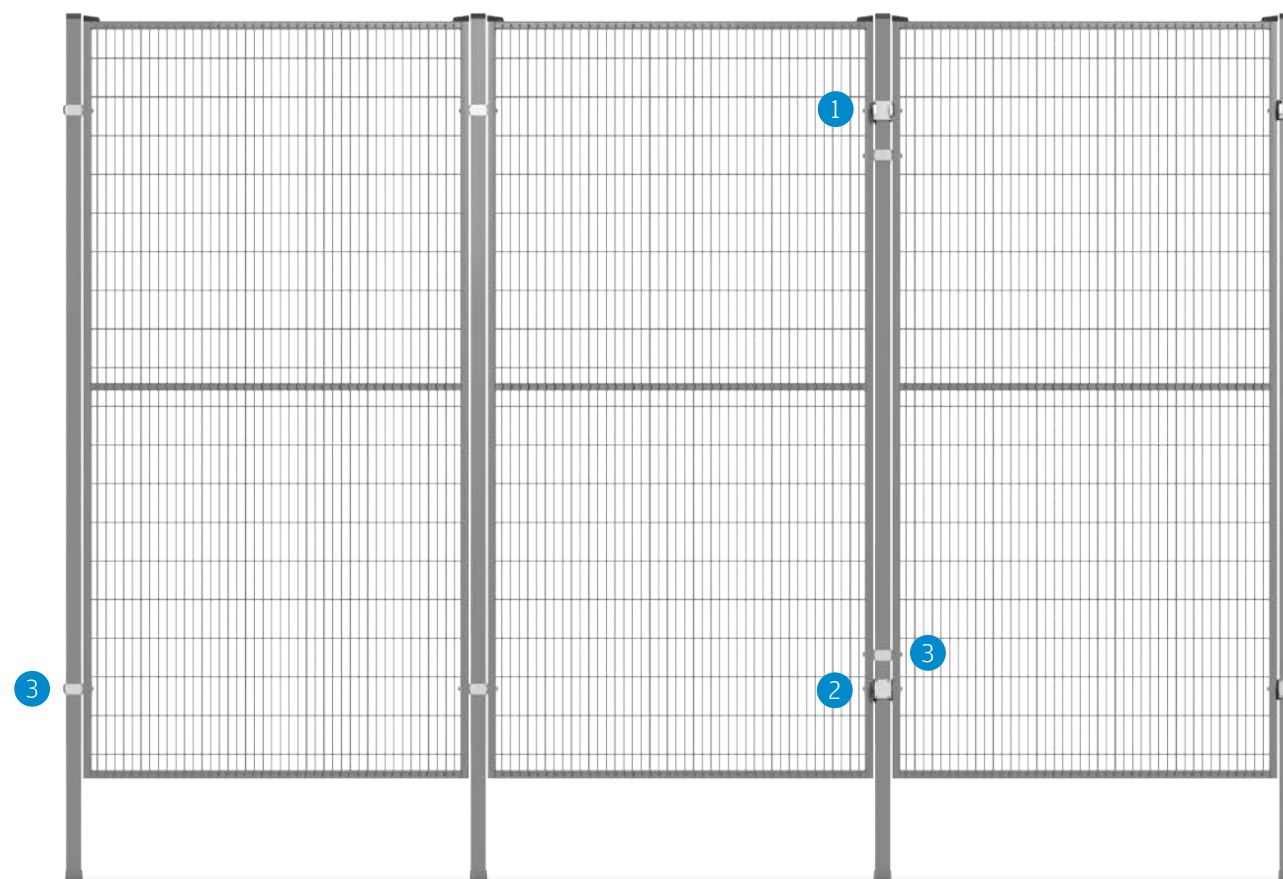
COMBINED

SMART FIX™ + RAPID FIX™

Revolutionary Combination possibilities

Since Rapid Fix uses the same posts and panels as Smart Fix, it is possible to combine the two systems. If Smart Fix is already

installed, simply change the brackets to upgrade to Rapid Fix when quick access is required. Of course, you may wish to do the opposite and have protection fixed in place with Smart Fix.



The idea throughout the development of Rapid Fix has been that it should be possible to upgrade, select and combine the two systems without having to replace an existing Smart Fix system.

[Read more at www.troax.com/rapidfix](http://www.troax.com/rapidfix)

TROAX®

Need help to choose machine guard?

Here are some FAQ's to help you.

Q: We need to get all-around access to the installation!

A: For best access you should choose a complete installation of *Rapid Fix*.

Q: We need access to certain parts of the machinery!

A: Use a combination of *Smart Fix* and *Rapid Fix*.

Q: We need a fixed machine safety solution!

A: The most suitable solution is *Smart Fix*.

Are you still unsure? Please call your local sales office today.

[Read more at www.troax.com/rapidfix](http://www.troax.com/rapidfix)

